



三韩刀具
SANDHOG

宁波三韩精密刀具制造有限公司
宁波三韩合金材料有限公司

www.sandhogtools.com.cn



SH 精磨切槽刀片

高精高效磨削的最佳选择



公司简介 Company Profile

宁波三韩精密刀具制造有限公司位于“书藏古今，港通天下”的宁波，毗邻中国最大的深水良港—北仑港，距杭州、上海、苏州各为2小时左右车程，距宁波栎社机场仅40公里，海、陆、空交通都十分便利。

公司前身是宁波市三韩刀具制造有限公司，创立于2004年，经过十多年的发展，现已成为工贸一体，内外销结合，产品集合车削、铣削、钻削刀杆和合金刀片的数控全产业链企业。公司下辖宁波三韩合金材料有限公司、宁波成量工具制造有限公司、宁波丰翼电子科技有限公司、宁波三韩进出口有限公司。

公司现有数控刀杆和刀片研发工程师8人，生产一线职工100余人，直销网点销售服务人员和专业售后工程师人员20余人；在工厂生产设备方面，现有17台加工中心，50余台数控磨床专机；配备精密检验仪器的一流测试中心，产品严格执行全检；运用计算机ERP网络管理系统，实行数字化生产管理模式，刀具生产均采用国内独创的标准化工艺。

目前，三韩刀杆工厂和三韩刀片工厂正在密切合作，联合两边的研发能力，协同开发适合国内机械加工的高品质、高效率数控产品，敬请期待！

Ningbo Sanhan Tools Manufacture co., Ltd, which is near the largest seaport-Beilunport in China, two hours' driving from Hangzhou, Shanghai and Suzhou, 16 kms away from the ningbo airport, is located in the coastal city - Ningbo.

Established in 2004, after more than 10 years' s development, now we aslo have Ningbo Sanhan Tools Imp. & Exp. Co., Ltd, Ningbo Sanhan Alloy Material co., ltd, meanwhile, 10 direct points of sale have formed over the whole china (shenyang, qingzhou, suzhou, shanghai, wenlin, ningbo, yuyao, cixi, dongguan), a joint-stock and high-tech company has already formed.

We are now the most professional manufacture for the cutting tools and threading inserts Private Enterprises. The scale of production, quality of products, management system, sales volume and brand awareness, are all in the front ranks; meanwhile, we are also member of the Chinese Machine and Tool Corporation, keeping in close touch with the machine tools field in tech-communicating and cooperation, trying our best to provide chinese manufacturing with as more as excellent cutting tools.

Now we have 7 engineers for reseaching tool holders and inserts, more than 10 after-sales engineers, 70 employees at the front-line for production, and 60 excellent salesmen and related service persons at the direct sale point spreading all over the main cities. Besides this, 9 advanced product lines with precise testing equipments and instruments will give us the most support. The application of PC' s ERP network management system and digital production management enable us to substantially manufacture turning, boring, thread, grooving and etc cutting tools, and drilling, milling and boring CNC cutting tool series.

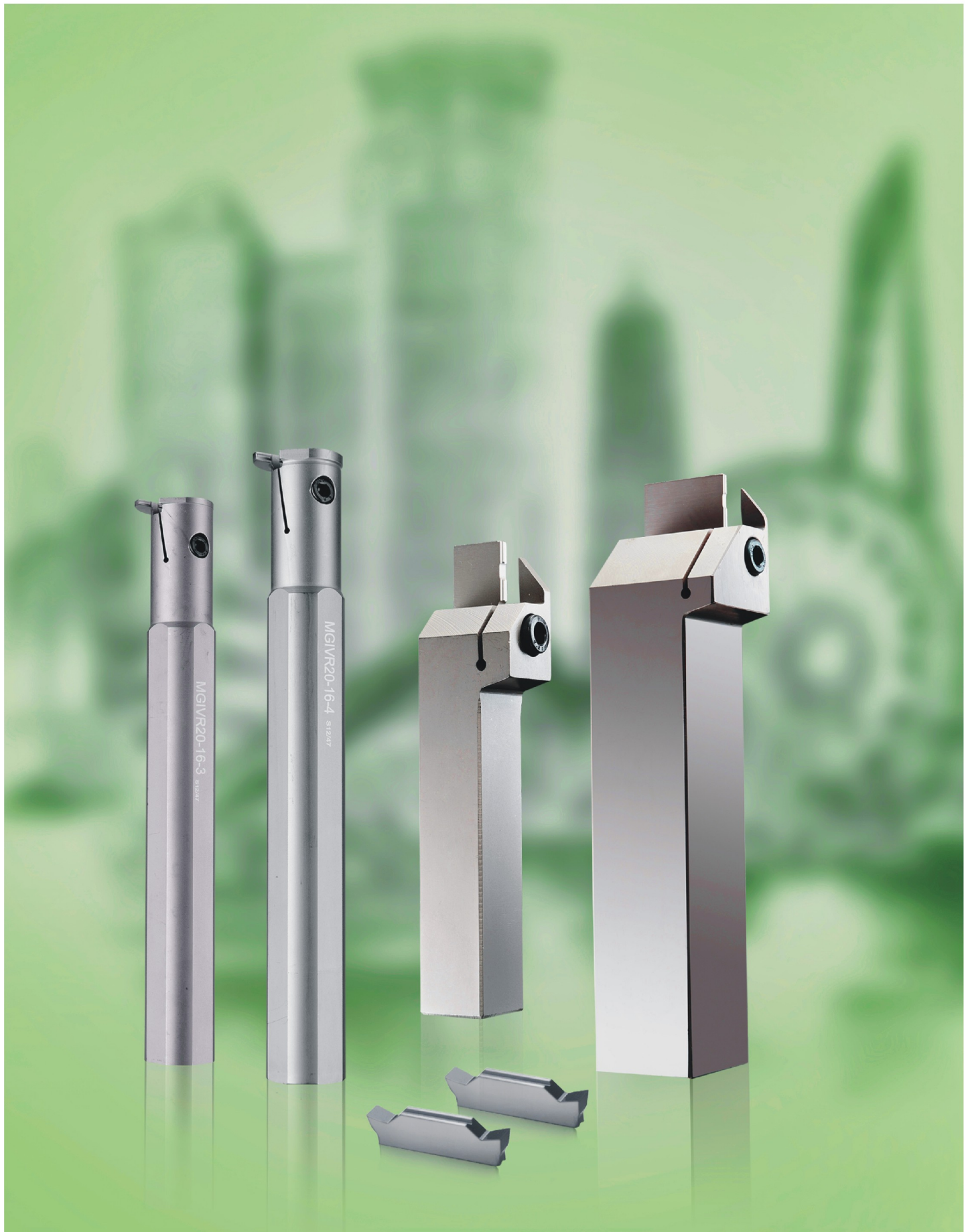
At the end of 2009, Ningbo Sanhan Alloy Material co., ltd was established, 10 advanced production lines were introduced to specializing manufacturing all types of standarded threading inserts, grooving inserts, AL-Alloy inserts and etc inserts named "SUPERMETALLOYO".

At present, the cooperation between Sanhan tools factory and Sanhan Alloy Material factory is under colse working, uniting both sides' research productivity to develop the suitable CNC tools with high-quality and high-efficiency, To be expected!



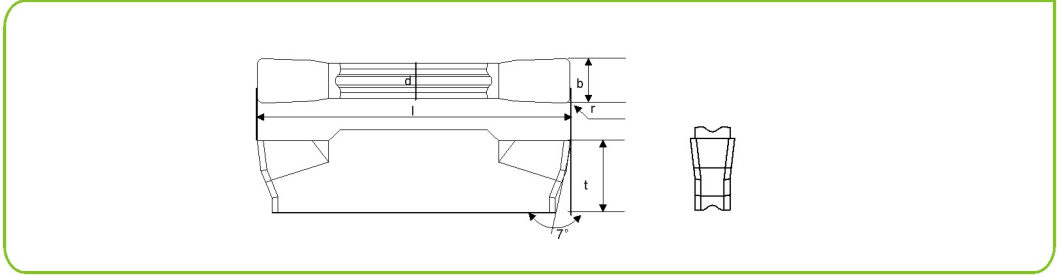
宁波三韩精密刀具制造有限公司

Ningbo Sandhog Precision Tools Manufacturing Co., Ltd.





MGGN

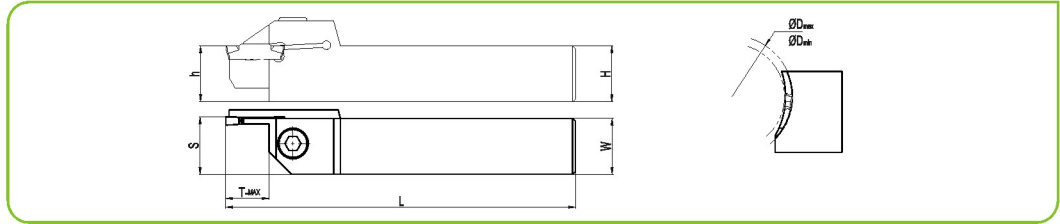
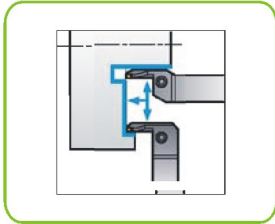


型号 Designation	库存 Stock		尺寸 Size					
	R	L	b	r	l	d	t	α
MGGN150-JM DP9030	●	●	1.5	0.2	16	1.2	3.5	7
JM DM9035	●	●	1.5	0.2	16	1.2	3.5	7
MGGN200-JM DP9030	●	●	2	0.2	16	1.6	3.5	7
JM DM9035	●	●	2	0.2	16	1.6	3.5	7
MGGN250-JM DP9030	●	●	2.5	0.2	18.5	2	3.85	7
JM DM9035	●	●	2.5	0.2	18.5	2	3.85	7
MGGN300-JM DP9030	●	●	3	0.4	21	2.35	4.8	7
JM DM9035	●	●	3	0.4	21	2.35	4.8	7
MGGN400-JM DP9030	●	●	4	0.4	21	3.3	4.8	7
JM DM9035	●	●	4	0.4	21	3.3	4.8	7
MGGN500-JM DP9030	●	●	5	0.8	26	4.1	5.8	7
JM Dm9035	●	●	5	0.8	26	4.1	5.8	7

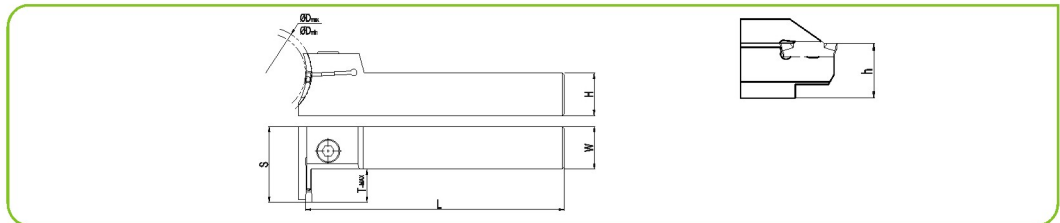
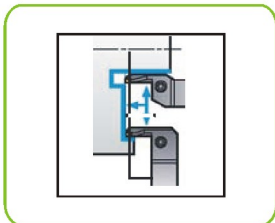
宁波三韩精密刀具制造有限公司

Ningbo Sandhog Precision Tools Manufacturing Co., Ltd.

MGFH/MGFV

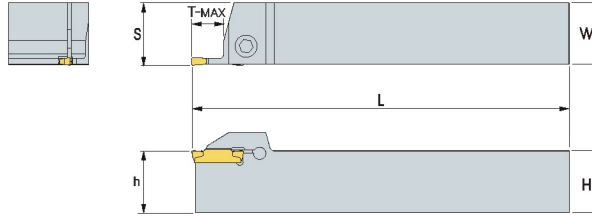
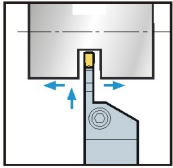


型号 Designation	库存 Stock		尺寸 Size							刀片 Inserts	螺钉 Screw	扳手 Wrench
	R	L	H	W	L	S	T _{max}	ϕ D _{min}	ϕ D _{max}			
MGFHR320-44/62-T15	●	●	20	20	125	20.6	15	44	62	MGGN300 MGMN300	M6X20N	L5.0
62/120-T15	●	●	20	20	125	20.6	15	62	120			
112/200-T15	●	●	20	20	125	20.6	15	112	200			
MGFHR325-44/62-T15	●	●	25	25	150	25.6	15	44	62			
62/120-T15	●	●	25	25	150	25.6	15	62	120			
112/200-T15	●	●	25	25	150	25.6	15	112	200			
MGFHR420-44/62-T15	●	●	20	20	125	20.6	15	44	62	MGGN400 MGMN400		
62/120-T15	●	●	20	20	125	20.6	15	62	120			
112/200-T15	●	●	20	20	125	20.6	15	112	200			
MGFHR425-44/62-T15	●	●	25	25	150	25.6	15	44	62	MGGN400 MGMN400		
62/120-T15	●	●	25	25	150	25.6	15	62	120			
112/200-T15	●	●	25	25	150	25.6	15	112	200			



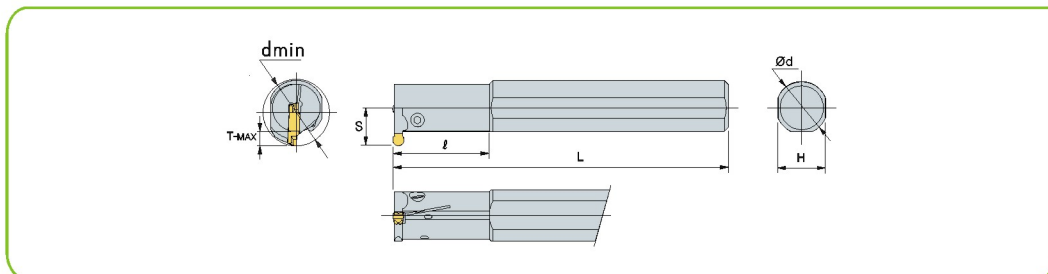
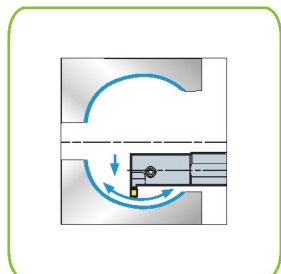
型号 Designation	库存 Stock		尺寸 Size							刀片 Inserts	螺钉 Screw	扳手 Wrench
	R	L	H	W	L	S	T _{max}	ϕ D _{min}	ϕ D _{max}			
MGFVR320-44/62-T15	●	●	20	20	125	31	15	44	62	MGGN300 MGMN300	M6X20N	L5.0
62/120-T15	●	●	20	20	125	31	15	62	120			
112/200-T15	●	●	20	20	125	31	15	112	200			
MGFVR325-44/62-T15	●	●	25	25	150	36	15	44	62	MGGN300 MGMN300		
62/120-T15	●	●	25	25	150	36	15	62	120			
112/200-T15	●	●	25	25	150	36	15	112	200			
MGFVR420-44/62-T15	●	●	20	20	125	36	15	44	62	MGGN400 MGMN400		
62/120-T15	●	●	20	20	125	36	15	62	120			
112/200-T15	●	●	20	20	125	36	15	112	200			
MGFVR425-44/62-T15	●	●	25	25	150	41	15	44	62	MGGN400 MGMN400		
62/120-T15	●	●	25	25	150	41	15	62	120			
112/200-T15	●	●	25	25	150	41	15	112	200			

MGEHR/L



型号 Designation	库存 Stock		尺寸 Size					刀片 Inserts	螺钉 Screw	扳手 Wrench
	R	L	H=h	W	L	S	T-MAX			
MGEHR/L 1616-1.5	●	●	16	16	100	16.2	15	MGGN150 MGMN150-G	M5X12N	L4.0
2020-1.5	●	●	20	20	125	20.2	15			
1616-2	●	●	16	16	100	16.25	15	MGGN200 MGMN200-G MGMN200-M	M5X16N	L4.0
2020-2	●	●	20	20	125	20.25	15			
2525-2	●	●	25	25	150	25.25	15	MGMN200□□-□□		
1616-2.5	●	●	16	16	100	16.30	17	MGGN250 MGMN250-G MGMN250-M	M5X16N	L4.0
2020-2.5	●	●	20	20	125	20.30	17			
2525-2.5	●	●	25	25	150	25.30	17			
1616-3	●	●	16	16	100	16.35	19	MGGN300 MGMN300-M/T	M6X20N	L5.0
2020-3	●	●	20	20	125	20.4	19			
2020-3-T10	●	●	20	20	125	20.4	10	MGMN300-□□-M		
2525-3	●	●	25	25	150	25.4	19	MRMN300-M		
2525-3-T10	●	●	25	25	150	25.4	10	MGMR300-□□-□□		
3232-3	●	●	32	32	170	32.4	19	MGMR300-□□-L/R		
2020-4	●	●	20	20	125	20.4	19	MGGN400 MGMN400-M/T	M6X20N	L5.0
2020-4-T10	●	●	20	20	125	20.4	10			
2525-4	●	●	25	25	150	25.4	19	MGMN400-□□-M		
2525-4-T10	●	●	25	25	150	25.4	10	MRMN400-M		
3232-4	●	●	32	32	170	32.4	19	MGMR400-□□-□□		
								MGMR400-□□-L/R		
2525-5	●	●	25	25	150	25.5	24	MGGN500 MGMN500-M/T	M6X20N	L5.0
2525-5-T15	●	●	25	25	150	25.5	15			
3232-5	●	●	32	32	170	32.5	24	MGMN500-□□-M		
								MRMN500-M		
								MGMR500-□□-□□		
								MGMR500-□□-L/R		
2020-6	●	●	20	20	125	20.6	24	MGGN600 MGMN600-M/T	M6X20N	L5.0
2020-6-T15	●	●	20	20	125	20.6	15			
2525-6	●	●	25	25	150	25.6	24	MGMN600-□□-M		
2525-6-T15	●	●	25	25	150	25.6	15	MRMN600-M		
3232-6	●	●	32	32	170	32.6	24			

MGIVR/L



型号 Designation	库存 Stock		尺寸 Size							刀片 Inserts	螺钉 Screw	扳手 Wrench
	R	L	dmin	Φ d	L	l	T-MAX	H	S			
MGIVR/L 2016-1.5	●	●	20	16	180	35	4	15	11.3	MGGN150 MGMN150-G	M4X10N	L3.0
2520-1.5	●	●	25	20	180	45	4	18	13.1		M4X12N	L3.0
2925-1.5	●	●	29	25	200	45	4	23	16.2			
2016-2	●	●	20	16	180	35	5	15	12.4	MGGN200 MGMN200-G MGMN200-M MRMN200-M	M4X10N	L3.0
2520-2	●	●	25	20	180	45	5	18	14.0		M4X12N	L3.0
2925-2	●	●	29	25	200	45	5	23	17.2			
2016-2.5	●	●	20	16	180	35	6	15	12.5	MGGN250 MGMN250-G MGMN250-M	M4X10N	L3.0
2520-2.5	●	●	25	20	180	45	6	18	15.1		M4X12N	L3.0
2925-2.5	●	●	29	25	200	45	6	23	18.2			
2520-3	●	●	25	20	180	45	6	18	15.6	MGGN300 MGMN300-M/G/T MRMN300-M MRMN300-□ □-L/R	M4X12N	L4.0
3125-3	●	●	31	25	200	45	6	23	18.9		M5X16N	
3732-3	●	●	37	32	250	65	6	30	21.5		M5X20N	
2520-4	●	●	25	20	180	45	6	18	15.6	MGGN400 MGMN400-M/G/T MRMN400-M MRMN400-□ □-L/R	M4X12N M5X16N M5X20N	L4.0
3125-4	●	●	31	25	200	45	6	23	18.9			
3732-4	●	●	37	32	250	65	6	30	21.5			
3125-5	●	●	31	25	220	45	8	23	19.4	MGGN500 MGMN500 □ □	M4X12N M5X16N M5X20N	L4.0
3732-5	●	●	37	32	250	65	8	30	21.5			



宁波三韩精密刀具制造有限公司
NINGBO SANDHOG PRECISION TOOLS MANUFACTURE CO.,LTD.

宁波三韩合金材料有限公司
NINGBO SANDHOG ALLOY MATERIAL CO.,LTD.

地址：浙江省宁波市慈溪龙山镇滨海开发区莲塘路333号

Add:No.333,Liantang Road,Binhai Development Zone,
Longshan town,Cixi,Ningbo City,Zhejiang Province,China

电话/Tel:+86-574-63990703

传真/Fax:+86-574-63990705

Email:sales007@sandhogtools.com.cn

<http://www.sandhogtools.com.cn>

代理商 AGENT

